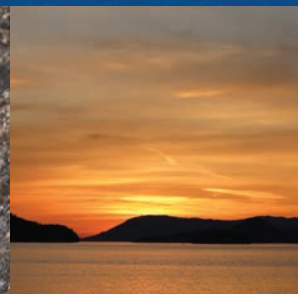


Please
leave this
guide for
others
to enjoy.

San Juan Islands

STEWARDSHIP GUIDE





B.Marrett

BE WATER WISE

With low rainfall from May to October, our water supply is not recharged during the summer, so please help us by being careful about how much water you use.



CLEAN WITH CARE

Use only nontoxic soaps and care products to avoid impacting local septic systems and treatment plants that drain to groundwater and the Salish Sea.

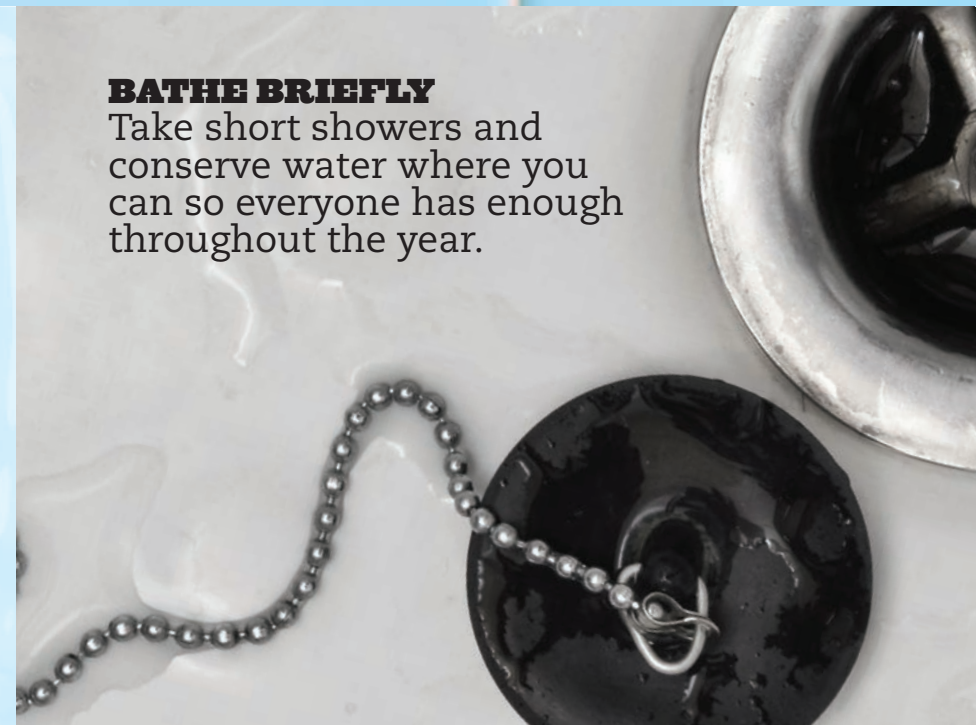


WATER WITHOUT WASTE

Drink plenty of water to avoid dehydration. Use your durable water bottle that can be refilled and help keep plastics out of the food chain for wildlife and humans.

BATHE BRIEFLY

Take short showers and conserve water where you can so everyone has enough throughout the year.



T. Dichiaro



LEAVE NO TRACE

Attracting over a million visitors every year, the Islands are beautiful yet fragile. Here are some tips that can help you preserve the environment for generations to come.

SJIVB



NO SHORTCUTS, NO LITTER

Trails get lots of use in the summer. Help us keep them in good condition by avoiding cut-offs, and picking up any inadvertent trash you spot to help Leave No Trace.

A. Nesler

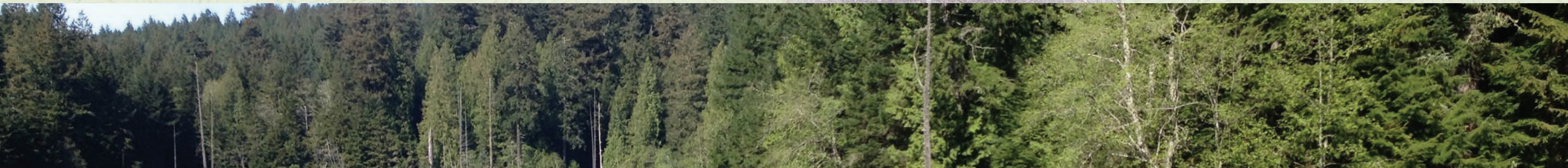
LOOK BUT DON'T TOUCH

Take care if you see a butterfly with green and white marbling on the underside of its wings. This rare beauty, the Island Marble butterfly, is found only on the San Juan Islands and is an endangered protected species.



BE A FRIEND TO THE BUTTERFLIES AND BEES

Wildflowers are beautiful, and it may be tempting to pick a bunch to take home, but please leave them for butterflies and other insects, small birds, and animals who depend on seeds, nectar, and pollen for their food supply and life support system.





BE A POOPER SCOOPER

Collect pet waste to protect our waters—and keep everyone's shoes clean.



SHOW US YOUR MUG

Bring your own reusable bottle or mug to reduce waste.



STAY GROUNDED

Please avoid launching balloons in the air, or pitching golf balls into the water. They can look like food and impact birds and wildlife.



BE WIND WARY

Make sure to secure all plastic products that could blow off your boat, dock, or residence. These could end up being consumed by wildlife and trash our beaches.



RECYCLING

Not sure if that container can be recycled? Don't be a spoiler—when in doubt, throw it out. Please keep recycling clean enough to reuse, or we risk the whole lot being trashed. If it doesn't look clean enough to reuse, it's not clean enough to recycle.

Seven Principles for Leaving No Trace

1. Plan ahead and prepare.
2. Stick to trails and camp overnight right.
3. Trash your trash and pick up poop
4. Leave it as you find it.
5. Be careful with fire. Use installed campfire rings for all fires.
6. Keep wildlife wild.
7. Be considerate of other visitors.

HAVE FUN. BE SAFE. LEAVE NO TRACE.



source: Leave No Trace:
sanjuanico.com/1124/Leave-No-Trace



NOT TOO CLOSE, I'M WILD

Even though our wildlife seems friendly, feeding them and tempting them to interact with humans puts them at risk. Use binoculars and a zoom on your camera to get up close and personal on land or water.

T. Dichiaro



KEEP THE PEACE

People enjoy the peace and tranquility the Islands provide. This can be shattered by behavior that might be normal elsewhere.



DRONES NOT PERMITTED IN PUBLIC PARKS AND CONSERVATION AREAS

Drone use is discouraged and not permitted in public parks and conservation areas. Please respect peoples' personal space and property rights.



VOICES CARRY

Use your indoor voice—outside. Sound and voices carry further on the Islands and across water. Help keep the peace by keeping your voice and music low.



ALL FIRES MUST BE CONTAINED

Burning is restricted in all but designated fire rings. Please help us keep the driftwood that protects our beaches and bluffs safe.

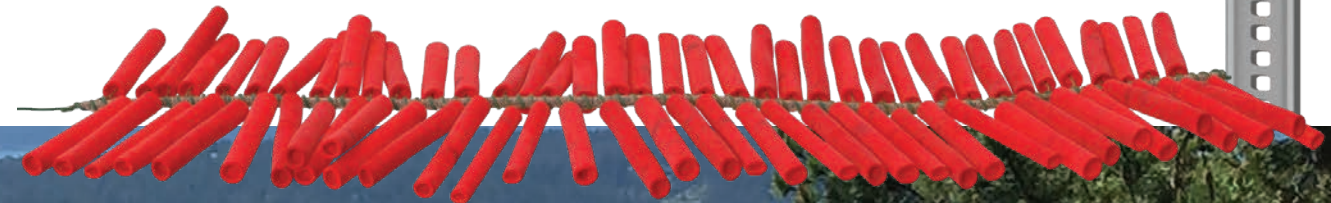


SMOKERS: PLEASE BE CONSIDERATE

Help keep our air clean and crisp for everyone. Avoid smoking or vaping in all public parks.

NO FIREWORKS ALLOWED, INCLUDING ON BOATS

Fireworks are not allowed in the Islands due to the high fire hazard during summer.



BE A MARINE STEWARD

Our marine waters are precious and require extra care and protection. Here's how we can keep our waters safe and healthy for wildlife, vegetation, and people.

KNOW THE ZONES

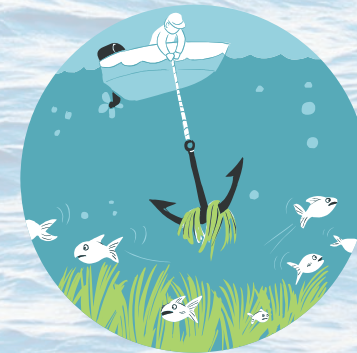
Know the rules about areas that are off-limits or have restrictions such as the whale and salmon sanctuary (voluntary no-go zone) and wildlife refuge areas. Go to sjcmrc.org to view the latest Marine Stewardship Area maps.

KEEP THE WATER CLEAN

We offer free use of blackwater pumpouts, and you can filter your bilge water to avoid dispersing oils and grease into the Salish Sea.

There are eight pump outs located on the San Juan Islands.

- Stuart Island
- Roche Harbor and Friday Harbor on San Juan Island
- Deer Harbor, West Sound Marina, West Beach, and Rosario on Orcas
- Island Marine on Fisherman Bay on Lopez



PROTECT EELGRASS

If you are a boater, use designated moorages (e.g., docks, buoys) and do not anchor in eelgrass beds, which are torn up by anchors. Eelgrass is habitat for forage fish and shellfish that get eaten by salmon and other wildlife that also feed our killer whales. It's all connected!



STAY SOBER STAY SAFE

Keep your wits about you and minimize or avoid consumption of alcohol while boating. The waters here are 50 degrees and below; you have less than five minutes to get out of the water before hypothermia sets in.



M. Wieland

BE WHALE WISE

As a marine stewardship area, San Juan County's beauty and abundant wildlife need extra protection.



BE SELECTIVE ABOUT THE TOURS YOU ATTEND

If you go on a guided whale watching, kayaking or fishing trip, ask about the laws and what the operator does on the water to support Southern Resident killer whale recovery and survival.



VIEW FROM SHORE

Look for whales from shore to reduce the impact of noise and physical disturbance on endangered Southern Resident killer whales.

GIVE WHALES THEIR SPACE

While on your boat, slow down to reduce noise and potential impact to wildlife, turn off your sonar, and look for the whale warning flag if you spot whales while on your boat. Do not approach or join a "pod-parazzi" of private boats to follow the whales. See www.bewhalewise.org for more information on restrictions and consequences of violating federal laws protecting marine mammals.



C. Hansen



TAKE IT

EASY

KEEP IT SLOW

When driving, go slow to keep wildlife, bicyclists, and pedestrians safe on our narrow country roads. The maximum speed on any San Juan Island is 45 mph, but in many places it is 20-30 mph. Observe speed limits.

DITCH THE CAR

Consider enjoying the Islands by bike or alternative transportation. Find a bike route for your Island at www.sanjuanco.com/1356/Map-Gallery.



K. Smith



T. Dichiaro



C. Silvernail



Look for the symbol (left) at local retailers and throughout the Islands for stewardship tips.

This guide was made possible with support from the San Juan County local lodging tax grant program and San Juan County Environmental Resources.



T. Best

San Juan County - Parks or Public Works www.sanjuanco.com
 San Juan County - Land Bank www.sjclandbank.org
 State Parks San Juan Islands www.parks.wa.gov
 National Parks - San Juan Islands www.nps.gov/sajh
 Bureau of Land Management - San Juan Islands <https://go.usa.gov/xnSyX>
 San Juan Islands Conservation District www.sanjuanislandscd.org
 San Juan Islands Visitors Bureau www.visitsanjuans.com
 San Juan Preservation Trust www.sjpt.org
 State Department of Natural Resources www.dnr.wa.gov/go
 US Fish and Wildlife Service www.fws.gov/refuge/san_juan_islands



K. Smith



H. Buchanan



M. Gardner



**GO SLOW. BREATHE
DEEP. COME SEE
BEAUTY IN THIS
PLACE. FEEL THE
BREEZE AND THE
WARMTH OF THE
SUN. LISTEN FOR
THE BIRDS AND
BLOW OF WHALES.
SMELL ALL THE
WILDFLOWERS.
RELAX. YOU ARE
ON ISLAND TIME
NOW. ENJOY.**