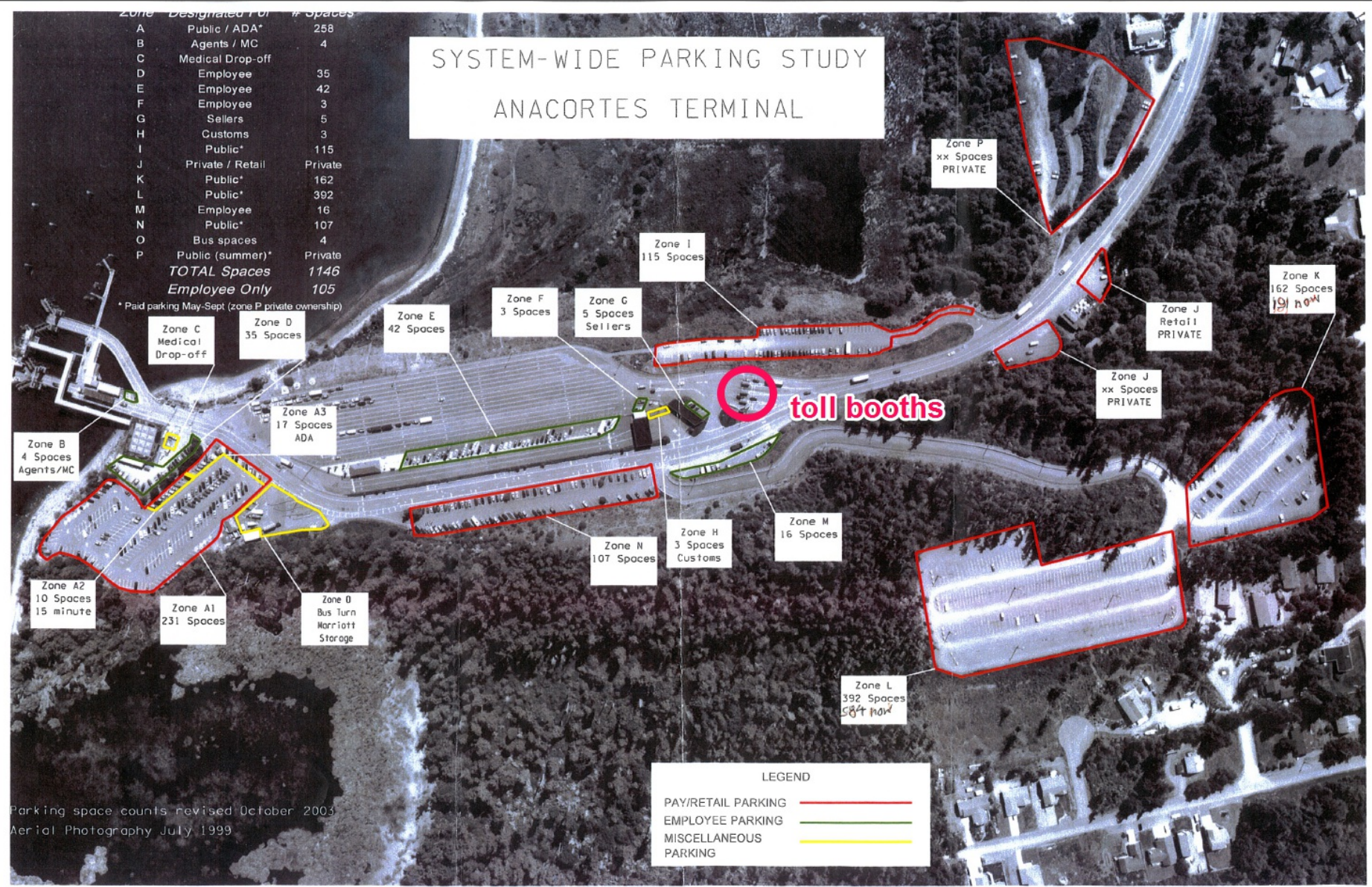


# SYSTEM-WIDE PARKING STUDY ANACORTES TERMINAL

Zone	Designated For	# Spaces
A	Public / ADA*	258
B	Agents / MC	4
C	Medical Drop-off	
D	Employee	35
E	Employee	42
F	Employee	3
G	Sellers	5
H	Customs	3
I	Public*	115
J	Private / Retail	Private
K	Public*	162
L	Public*	392
M	Employee	16
N	Public*	107
O	Bus spaces	4
P	Public (summer)*	Private
<b>TOTAL Spaces</b>		<b>1146</b>
<b>Employee Only</b>		<b>105</b>

\* Paid parking May-Sept (zone P private ownership)



**LEGEND**

- PAY/RETAIL PARKING (Red line)
- EMPLOYEE PARKING (Green line)
- MISCELLANEOUS PARKING (Yellow line)

Parking space counts revised October 2003  
Aerial Photography July 1999