

San Juan County Public Works Marine Facilities
 (Additional facilities at the County Parks)

**Table 1
County Public Works Marine Facilities located on
Ferry-Served Islands**

Island	Site Name	Marine Facilities	Outer Islands Served	Available Amenities and Resources	Key Transportation Uses
	Hunter Bay	Pier Float Ramp	Center Decatur Frost Trump	Parking Toilet	<ul style="list-style-type: none"> • Access including barge landing for delivery of people, vehicles and freight from the mainland to Lopez and from Lopez to Decatur and the other outer islands. • Access on Lopez for Decatur and other outer island residents for business, services, work, and school. • Recreational access for Lopez residents • Long term parking for Decatur and Center residents.
Lopez	MackKaye Harbor	Pier Float Ramp		Parking short-term Toilet	<ul style="list-style-type: none"> • Barge landing for delivery of people, vehicles, and freight from the mainland to southern Lopez, including delivering gravel for County road repair. • Boat launch for Lopez residents traveling to Orcas, Lopez Village, San Juan, or mainland for business, services, work and school. • Recreational access for Lopez residents
	Odlin Park	Pier Float Ramp Nearby Mooring Buoys owned by County Parks		Camping Mooring buoys Parking short-term Taxi Toilet Water-potable	<ul style="list-style-type: none"> • Emergency back up to Lopez WSF Terminal. • Barge landing for propane and gasoline delivery to Lopez. • Access including barge landing for delivery of people, vehicles and freight from the mainland to Lopez and from Lopez to outer islands. • Access to County Park camp sites. • Recreational access for Lopez residents
	Deer Harbor Marina	Leased float at Marina Private Marina Facilities available	Crane Fawn Waldron Wasp	Fuel Groceries Freight crane Lodging Parking Post Office Restaurants Retail Shops Taxi Toilet Showers Water-potable	<ul style="list-style-type: none"> • Access on Orcas for delivery of people and freight to and from outer islands. • Access for outer island residents traveling to Orcas for business, services, work, school and to pick up mail. • Limited parking for Waldron and other outer island residents.
Orcas	Obstruction Pass	Pier Float Ramp	Barnes Blakely Clark Obstruction Matia Patos Sucia	Parking Taxi Toilet	<ul style="list-style-type: none"> • Emergency back up to Orcas WSF Terminal. • Barge landing for propane and gasoline delivery to Orcas. • Access including barge landing for delivery of people, vehicles and freight from the mainland to Orcas and from Orcas to outer islands. • Boat launch for Orcas residents commuting for business, services, work and school. • Parking for outer island residents • Recreational access for Orcas residents

Island	Site Name	Marine Facilities	Outer Islands Served	Available Amenities and Resources	Key Transportation Uses
	Orcas Landing	Pier Float		Ferry Access Fuel Groceries Lodging Parking Post Office Restaurants Retail Shops Taxi Toilet Water-potable	<ul style="list-style-type: none"> Ferry passenger access to WSF Terminal Access on Orcas for delivery of people and freight from the mainland to Orcas and from Orcas to outer islands. Docking facilities for Sheriff and Coast Guard vessels.
Orcas	Madrona Point	Pier Float		Fuel Groceries Lodging Parking Post Office Restaurants Retail Shops Taxi Toilet Water-potable	<ul style="list-style-type: none"> Access to Eastsound businesses for outer island residents and visitors from the mainland.
	West Sound	Pier Float Stairway to beach	Big Double Little Double Picnic	Limited parking on street	<ul style="list-style-type: none"> Access on Orcas for delivery of people and freight to/from outer islands. Recreational access (launching kayaks) for Orcas residents
San Juan	Roche Harbor	Pier Float Private ramp nearby	Cactus Henry Johns O'Neil Pearl Satellite Spieden Stuart	Fuel Groceries Lodging Parking Post Office Restaurants Retail Shops Taxi Toilet Water-potable	<ul style="list-style-type: none"> Access for Stuart Island and other outer island residents traveling to San Juan Island for business, services, work, and school. Long term parking for Stuart, Waldron and outer island residents.
	Griffin Bay	Pier (not operational) Barge landing			<ul style="list-style-type: none"> Emergency backup for San Juan WSF Terminal Access for vehicles and freight from the mainland and to the outer islands
Shaw	Neck Point Cove	Beach Landing			<ul style="list-style-type: none"> Access on Shaw Island for delivery of people, vehicles and freight. Boat launch for access to outer islands. Boat launch for Shaw residents traveling to Lopez, Orcas, San Juan, or mainland for business, services, work, and school. Recreational access for Shaw residents.
	Shaw Landing (not operational)	Pier		Ferry Access Groceries Post Office Toilet	When operational: <ul style="list-style-type: none"> Ferry passenger access to WSF Terminal. Access for delivery of people and freight to Shaw Island.

Table 2
County Public Works Marine Facilities
Located on Outer Islands with County Roads

Island	Site Name	Marine Facilities	Available Resources and Amenities	Key Transportation Uses
Decatur	Decatur Island	Ramp	Short term parking	<ul style="list-style-type: none"> • Access for delivery of people, vehicles and freight. • Barge access for propane and gas delivery. • Boat launch for Decatur commuters traveling to Lopez, Orcas, San Juan, or mainland for business, services, work and school.
Stuart	Prevost Harbor	Pier Float	Freight crane	<ul style="list-style-type: none"> • Access for delivery of people and freight. • Access for Stuart commuters traveling to Lopez, Orcas, San Juan, or mainland for business, services, work and school. • US Mail Delivery to Stuart Island residents.
	Reid Harbor	Ramp Nearby public floats owned by State Parks	Parking Toilet Camping	<ul style="list-style-type: none"> • Access for delivery of people, vehicles and freight. • Barge access for propane and gas delivery. • Boat launch for Decatur commuters traveling to Lopez, Orcas, San Juan, or mainland for business, services, work and school. • 72 hour parking at boat ramp • Access to camping and hiking at Stuart Island Marine State Park and Turn Point Lighthouse.
Waldron	Waldron Island	Pier Float Private beach landing located nearby	Freight crane	<ul style="list-style-type: none"> • Access for delivery of vehicles and freight. • Access for Waldron commuters traveling to Lopez, Orcas, San Juan, or mainland for business, services, work and school. • US Mail Delivery to Waldron Island residents



Decatur Island Ramp

RP169



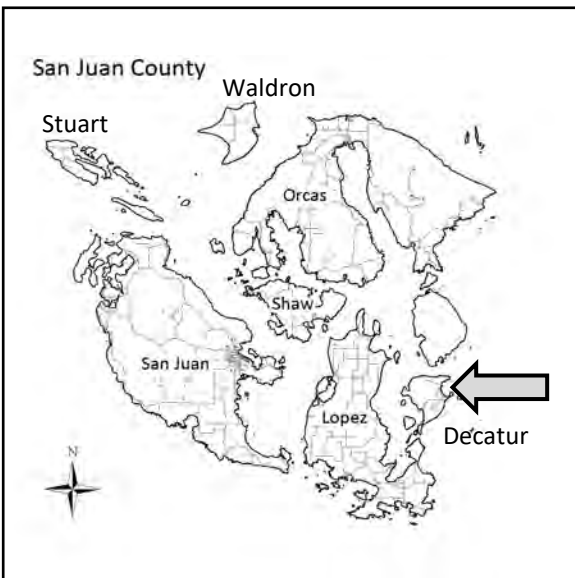
Asset	Description	Installed
Ramp	16' x 110' Precast concrete, 1-foot thick logs	2009

Facility Description: East side of Decatur Island. Accessed via Decatur Beach Rd. Ramp serves the commercial and recreational needs of residents. Fuel and propane deliveries are a regular occurrence. Facility was reconstructed in 1994 and completely replaced in 2009. There are no amenities at this facility. Limited, short term parking available.

Fees: There are no fees associated with the use of this facility.

Ownership: San Juan County Right of Way. AFN 1921-0018695, V14, P534.

Aquatic Lands Lease: Tidelands are privately owned.





Hunter Bay Marine Facility

DK125, FL125, RP125, BA125



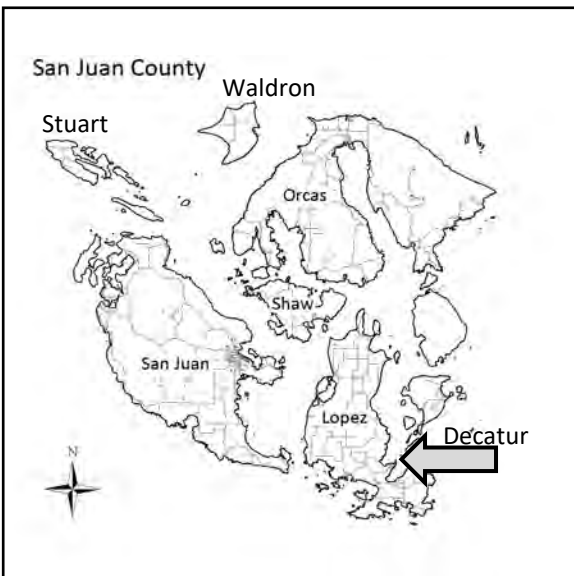
Asset	Description	Installed
Pier	12' x 81' Drive-on timber deck, railing, & bullrail; timber piles; 12' x 12' landing apron; +13.5 MLLW	1995
Gangway	3.5' x 32' Galvanized steel tube frame with timber deck	1995
Float	9.5' x 80' Monolithic timber float; timber piles	2000
Ramp	14' x 120' Precast concrete, 1-foot thick logs	2016

Facility Description: Southeast end of Lopez Island. Accessed via Crab Island Rd. Pier and float are accessed by a causeway approximately 115 feet. Facility serves important commercial and non-commercial trade and traffic from and to the outer islands, predominantly Decatur Island. Residents of outer islands use facility for transporting children to schools and commuting to work or shopping. Life ring and ladder installed. County provides a portable toilet year-round. Parking for vehicles and vehicles with trailers is available.

Fees: Parking permits issued by Public Works. The price for a permit is \$25 per year. Temporary permits may be issued for a maximum of 120 days. There is a fee of \$25 for a temporary permit. No permit is required to use the float or ramp.

Ownership: San Juan County Right-of-Way.

Aquatic Lands Lease: DNR 20-A10354. Expires 2034-12-15.





MackKaye Harbor Marine Facility

DK236, RP236, BA236



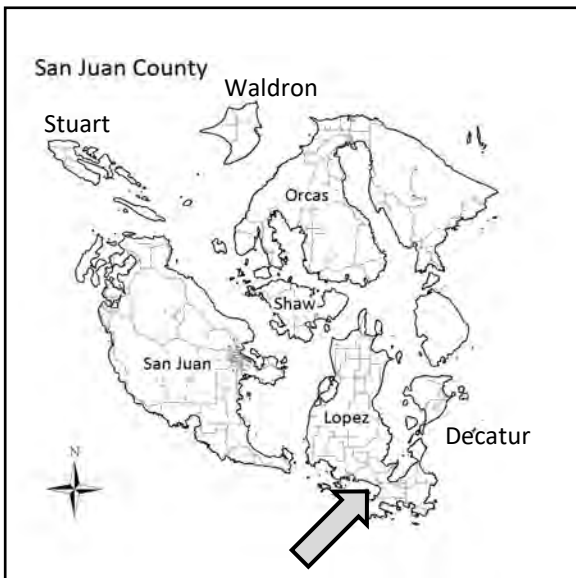
Asset	Description	Installed
Gangway	4' x 36' Aluminum, attached to concrete abutment	2000
Float	8' x 62' (3-20' sections) Grooved timber grounding floats; steel piles	2000
Ramp	16' x 100' Precast concrete, 6-inch thick logs	2007

Facility Description: Southwest side of Lopez Island. Accessed via Norman Rd. There is a short riprap breakwater to the north of the ramp. Breakwater was installed in 2003 with County forces. Facility is primarily used for recreational purposes, although the ramp is used for importing gravel by barge (via a shallower draft transition barge) for road repair. Life ring installed. County provides a portable toilet year-round. Parking for vehicles and vehicles with trailers is available.

Fees: There are no fees associated with the use of this facility.

Ownership: San Juan County Public Works. TPN 141880005.

Aquatic Lands Lease: DNR 20-A12559. Expired 2009-07-31, in holdover status.





Odlin Park Marine Facility

DK128, FL128, RP128



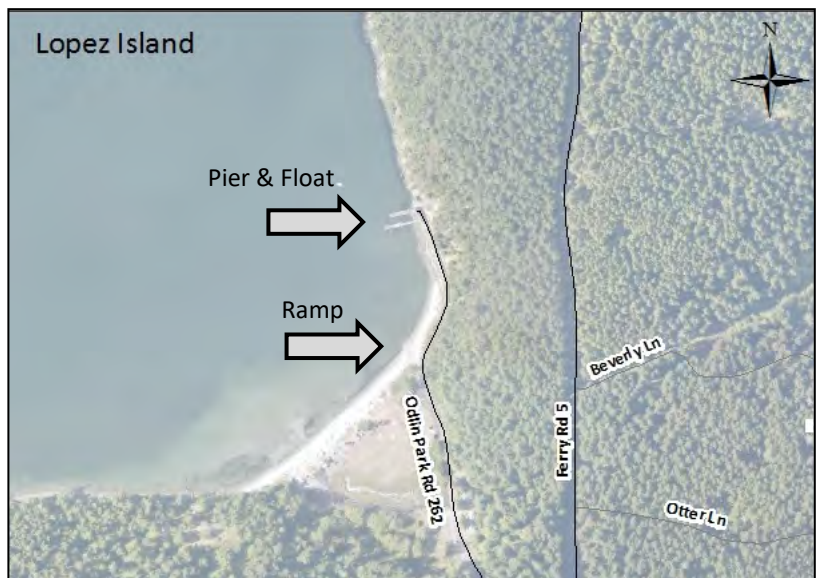
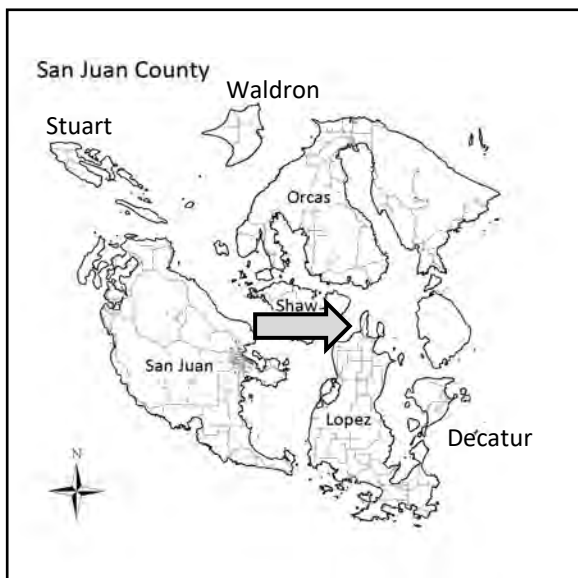
Asset	Description	Installed
Pier	22' x 25' Approach apron & 12' x 60' timber deck & railing; timber piles; bullrail; +14.3 MLLW	1992
Gangway	4' x 80' Aluminum frame and railing	2016
Float	10' x 50' Timber and Fiberglass Reinforced Plastic (FRP); steel piles	2016
Ramp	24' x 110' Precast concrete, 1-foot thick logs; steel sheet piles; 24' x 19' Poured concrete apron	2003

Facility Description: Northwest side of Lopez Island, within Odlin Park. Accessed via Odlin Park Rd. Facility is used by a wide range of users, including people using Odlin Park and by commercial and recreational vessels. The ramp plays an important role in providing commercial access to the north part of Lopez Island. Facility may be used for loading and unloading private ferries during an emergency power outage at the ferry terminal. Life ring and ladder installed. Potable water, vault toilets and camping accommodations are available within the park. Parking for 12 to 18 vehicles and trailers is available. Mooring buoys provided by Park.

Fees: There are no fees for the use of the pier and float. Commercial use of the ramp requires a permit obtained through San Juan County Parks Department. Fees for mooring buoys administered by Park.

Ownership: San Juan County Parks & Recreation. TPN 250241001.

Aquatic Lands Lease: DNR 20-073581. Expires 2045-09-30. AFN 2015-1229022.





Deer Harbor Marina Float Space

##



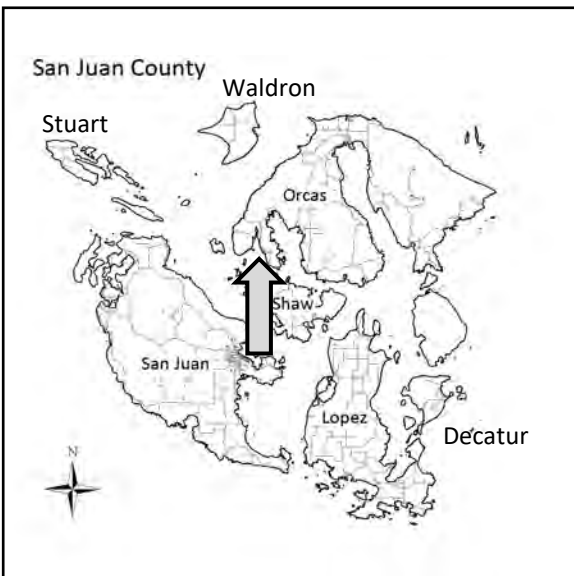
Asset	Description	Installed
Float	100' Timber float	N/A

Facility Description: South end of the west side of Orcas Island. Accessed via Deer Harbor Rd. County leases space from Deer Harbor Marina. The facility serves the private and commercial needs of outer island residents, primarily those from Waldron Island. The crane (DK042) is used for loading and unloading. Marina has bathrooms, showers and a small grocery store located on the pier.

Fees: Permits are administered by Public Works and cost \$15 per year. At this time, Public Works does not enforce permit requirements.

Ownership: Deer Harbor Marina LLC. TPN 260731013. Lease AFN 96122311. Expires 2020-05-31.

Aquatic Lands Lease: N/A





Obstruction Pass Marine Facility

DK066, FL066, RP066, BA066



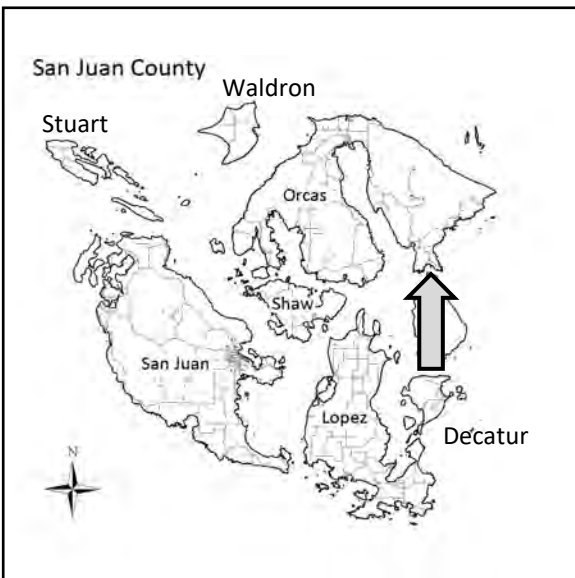
Asset	Description	Installed
Pier	12' x 107' Timber deck & railing; timber creosote piles	1982
Gangway	4' x 36' Aluminum frame & railing	1999
Float	10' x 40' Timber float; steel piles	2013
Ramp	16' x 100' Precast concrete, 6-inch thick logs overlaid on concrete slab	2004

Facility Description: South end of the eastern portion of Orcas Island. Accessed via Obstruction Pass Rd. Provides primary commercial and community linkage to Blakely and Obstruction Islands. All gasoline and propane is delivered via this ramp. The ramp serves as an alternative launch site for vehicles via barge when the state ferry service is interrupted. Life ring and ladder installed. County provides a portable toilet year-round. Parking for vehicles and trailers is available.

Fees: There are no fees associated with the use of this facility.

Ownership: San Juan County Public Works. TPN 161650110.

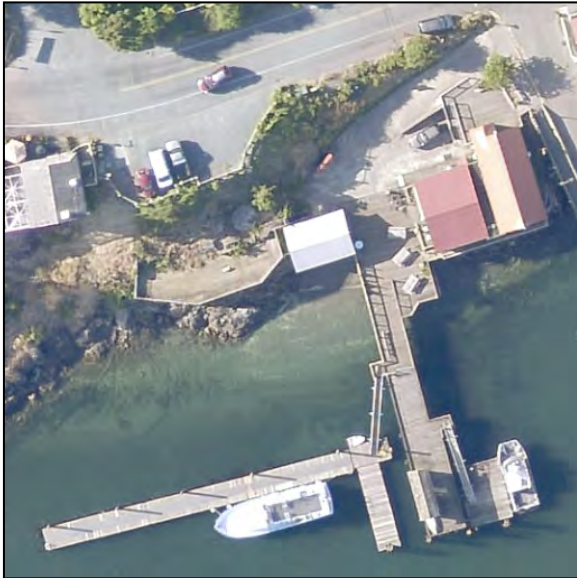
Aquatic Lands Lease: DNR #20-A11622. Expired 2012-12-31, in holdover status.





Orcas Landing Marine Facility

DK004, FL004, BA004



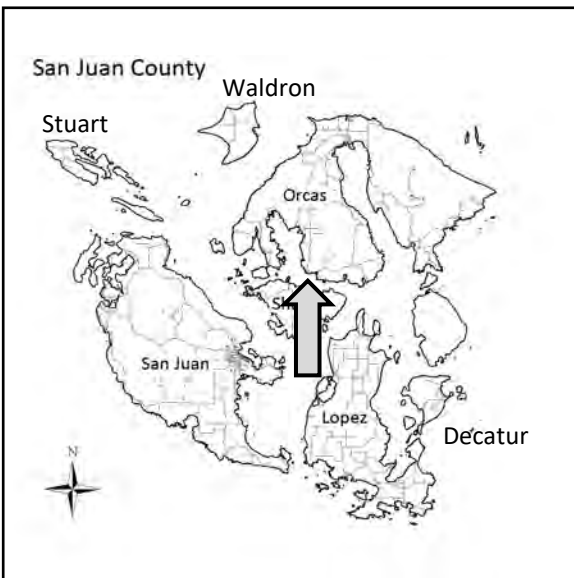
Asset	Description	Installed
Pier	32' x 134' Timber deck & railing; timber pilings (width is widest point)	2006
Gangway	Two (2) 3' x 35' Aluminum tube	2006
West Float	10' x 150' (3-50' sections) Timber & fiberglass reinforced plastic deck; steel piles; 10' x 18' & 10' x 40' timber deck; timber piles	2006
East Float	20' x 28' Timber deck; timber piles	2006

Facility Description: South side of the western portion of Orcas Island. Accessed via Orcas Rd. Facility is used for recreational and commercial uses. South end of pier and east float is reserved for U.S. Coast Guard and San Juan County Sheriff, respectively. There is a 6' x 20' shed on the south end of the pier. Limited parking is available. Life ring and ladder installed. Public restrooms, restaurants, and groceries available nearby. No amenities available on the County dock.

Fees: There are no fees associated with the use of this facility.

Ownership: San Juan County Public Works. TPN 262222014.
Purchased from private party in 2008.

Aquatic Lands Lease: DNR 20-C10227. Expires 2021-08-31.





Madrona Point Marine Facility

DK054, FL054, BA054



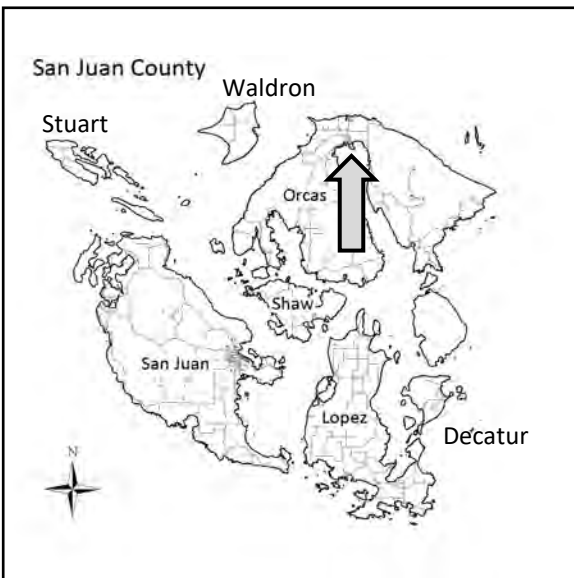
Asset	Description	Installed
Pier	14' x 112' Timber deck & railing; timber piles; +14 MLLW	1990
Gangway	4' x 36' Aluminum	1990
Float	13' x 40' Concrete deck, timber piles	1990

Facility Description: North end of East Sound, on the west side of Madrona Point. Accessed via Haven Rd. Facility is used for primarily recreational use with occasional commercial use. Life ring and ladder installed. There are no amenities at this facility. Parking is available.

Fees: There are no fees associated with the use of this facility.

Ownership: San Juan County Public Works. TPN 271460066.

Aquatic Lands Lease: DNR 20-013113. Expired 2001-05-31, in holdover status.





West Sound Marine Facility

DK045, FL045



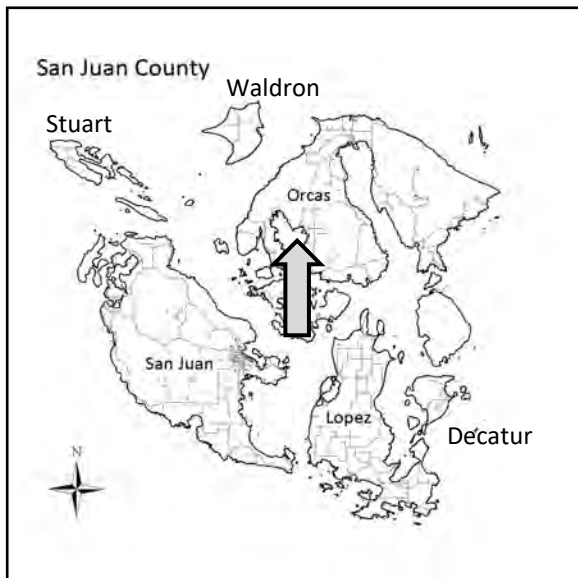
Asset	Description	Installed
Pier	7' x 142' Timber deck & railing; timber piles; +13.5 MLLW	1989
Gangway	4' x 36' Aluminum	1989
Float	8' x 76' (2-38' sections) Concrete deck, timber piles. 4' x 6' galvanized ramp connects sections.	1989
Stairway to beach	4' x 11' Galvanized steel; concrete abutment	2018

Facility Description: North end of West Sound. Accessed via Deer Harbor Rd. Facility used by recreationists and occasionally commercial fishermen who need temporary moorage during storms, emergencies, or short-term visits. Residents of Big Double, Little Double and Picnic Islands use facility as an access point. Residents of Orcas Island may occasionally use this facility, most go to Deer Harbor Marina. Steps to beach provide access for recreational kayakers. Life ring and ladder installed. There are no amenities at this facility. Limited parking is available.

Fees: There are no fees associated with the use of this facility.

Ownership: San Juan County Public Works. TPN 260434015.

Aquatic Lands Lease: DNR 20-012862. Expires 2019-03-19.





Griffin Bay Barge Landing

BA252



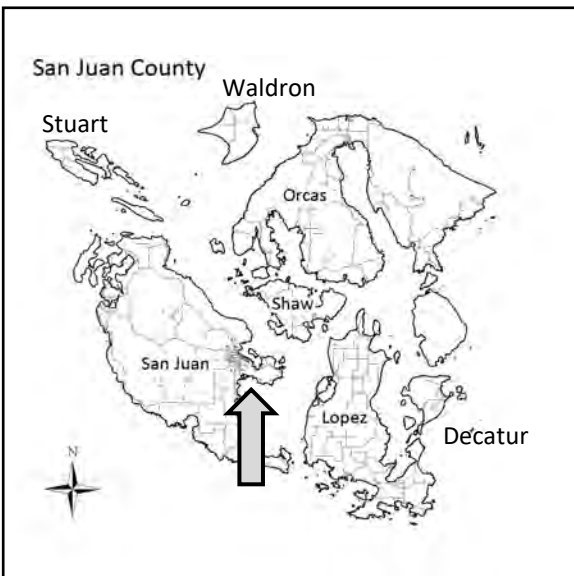
Asset	Description	Installed
Barge Landing	Timber stringers, timber pilings	

Facility Description: East side of San Juan Island. Accessed via Jacksons Beach Rd. Access road to facility is controlled by a locked gate. Facility is unusable in its current state. Vault toilets are available at the end of Jacksons Beach Rd.

Fees: There are no fees associated with the use of this facility.

Ownership: San Juan County Public Works. TPN 352412001.

Aquatic Lands Lease: DNR #20-012244. Expired 1997-10-31, in holdover status.





Roche Harbor Marine Facility

DK270, FL270



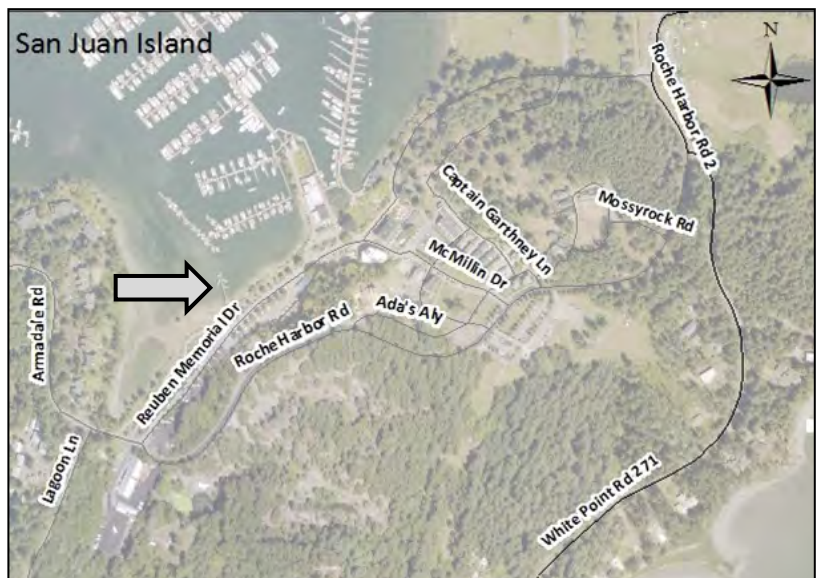
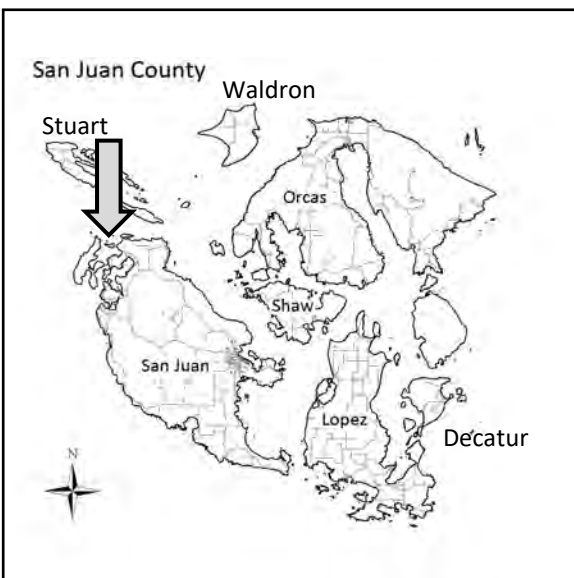
Asset	Description	Installed
Pier	10' x 47' Timber deck & railing; steel piles	2011
Gangway	4' x 50' Aluminum frame & railing	2011
Float	8' x 60' GLULAM Frame, ADA & WDFW Fibergrate deck; steel piles	2011

Facility Description: North end of San Juan Island. Accessed via Reuben Memorial Dr., a private road. Provides temporary moorage for residents of the outer islands (primarily Henry, John, and Stuart). Numerous private docks and a public access dock are available nearby. Ladder is installed. No life ring installed. Parking is available. No amenities available on the County dock. Water, fuel, power, public restrooms, restaurants, groceries available nearby at the Roche Harbor Resort.

Fees: Moorage and parking permits issued by Public Works. If bought simultaneously, the price for a moorage permit and a parking permit is \$25 per year. Price is \$25 per year, per permit, if bought separately.

Ownership: New RH LLC (Roche Harbor Resort). TPN 462353124. Dock Easement AFN 2010-0924006.

Aquatic Lands Lease: DNR #20-085419. Expires 2022-08-31.





Neck Point Cove Beach Landing

##



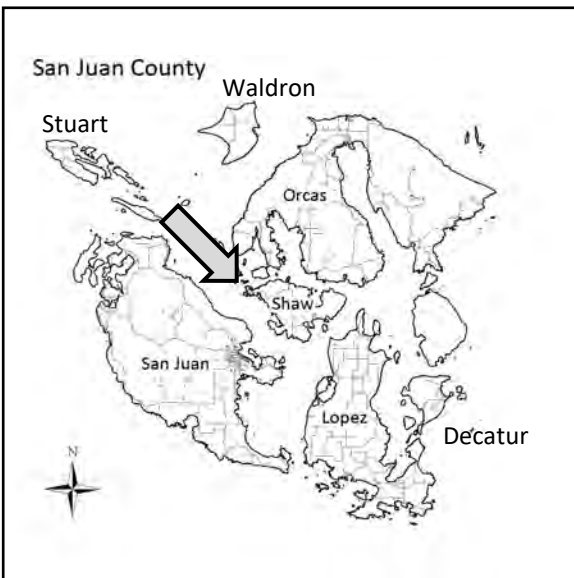
Asset	Description	Installed
Ramp	Gravel beach	N/A

Facility Description: Northwest side of Shaw Island. Located at the end of Harbor Way. At high tides, barges are able to deliver supplies, fuel and materials. There is no structure built as a boat ramp. There are no amenities at this facility. Limited parking available. Area is considered a road end and is not an “official” Public Works facility.

Fees: There are no fees to use this facility.

Ownership: San Juan County Right-of-Way.

Aquatic Lands Lease: N/A





Shaw Landing Pier

DK096



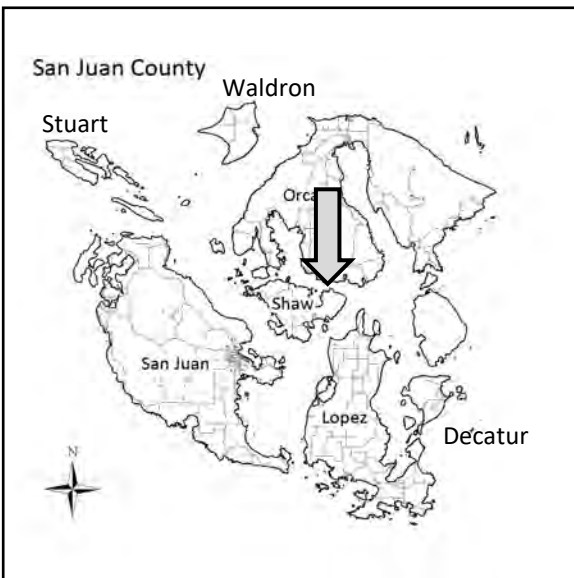
Asset	Description	Installed
Pier	5' x 40' Timber deck & railing	Unknown

Facility Description: Northern shore of Shaw Island. Accessed via Blind Bay Rd, adjacent to the ferry landing. Facility is used by residents and visitors. No life ring or ladder is installed. There is a small grocery store and public bathrooms available nearby.

Fees: There are no fees to use this facility.

Ownership: San Juan County Right-of-Way.

Aquatic Lands Lease: N/A





Prevost Harbor Marine Facility

DK143, FL143



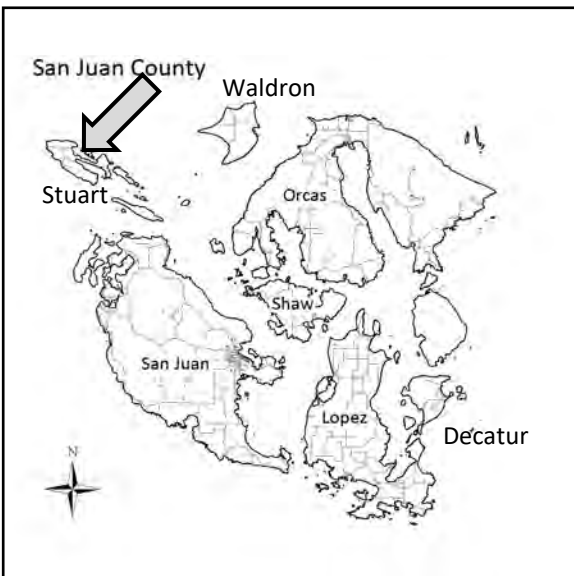
Asset	Description	Installed
Pier	12' x 235'; 8' x 28' extension; timber deck, railing, & bullrail; timber piles; +13 MLLW	1950s
Gangway	3'8" x 36' Painted aluminum	2005
Float	8' x 60' Timber deck, steel piles	2005

Facility Description: Northern harbor located on the east side of Stuart Island. Accessed via Lighthouse Rd. Extension was added to pier when gangway and float were installed. Residents, school children and visitors use the facility to access the island and to load and unload supplies. A crane is installed at the southeast corner of the main pier. Life ring and ladder installed. There are no amenities at this facility.

Fees: There are no fees to use this facility.

Ownership: San Juan County Road Right-of-Way.

Aquatic Lands Lease: DNR 20-071922. See Regulations.





Reid Harbor Ramp

RP450



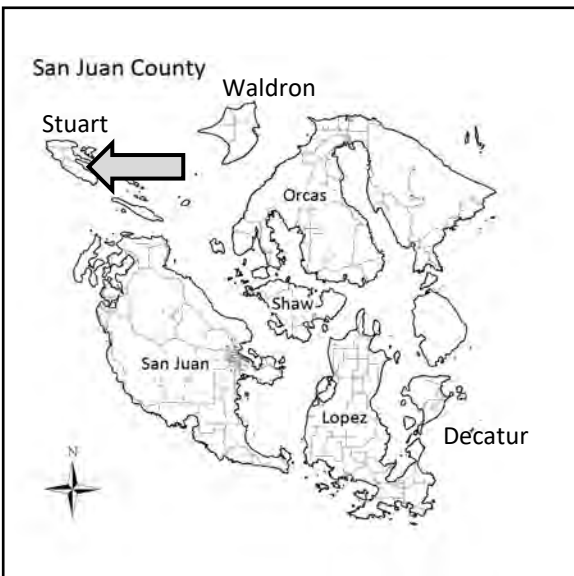
Asset	Description	Installed
Ramp	16' x 75' Precast concrete, 6-inch thick logs	1993

Facility Description: Southern harbor located on the east side of Stuart Island. Accessed via Reid Harbor Rd, within Stuart Island Marine State Park. Facility used to deliver bulk materials (building and road), fuel, and small boat launching. Vault toilets are available at the State Park. Nearby floats are owned by State Parks.

Fees: There are no fees to use this facility.

Ownership: State of Washington Parks & Recreation. TPN 472813001.

Aquatic Lands Lease: Unknown





Waldron Island Marine Facility

DK014, FL014



Asset	Description	Installed
Pier	12' x 184' with 27' x 58' Turning apron; timber deck & railing, steel piles	1999
Gangway	4' x 36' Aluminum	1999
Float	14' x 32' Timber, steel piles	1999
Ramp	Hard-packed earth	N/A

Facility Description: Southwest shore of Waldron Island. Accessed via Cowlitz Bay—Waldron Center Rd. Facility is primarily used by residents. Pier was designed for the equivalent of H15 loading, or 150-lbs./sq. ft. live load. There is a hand-operated jib crane used for loading and unloading supplies. The area south of the pier has road access and is used as a ramp for boat landing. Life ring and ladder installed. There are no amenities at this facility.

Fees: There are no fees to use this facility.

Ownership: San Juan County Public Works. TPN 372311006 and 372312002.

Aquatic Lands Lease: DNR 10500. Expired 2004-11-19, in holdover status.

